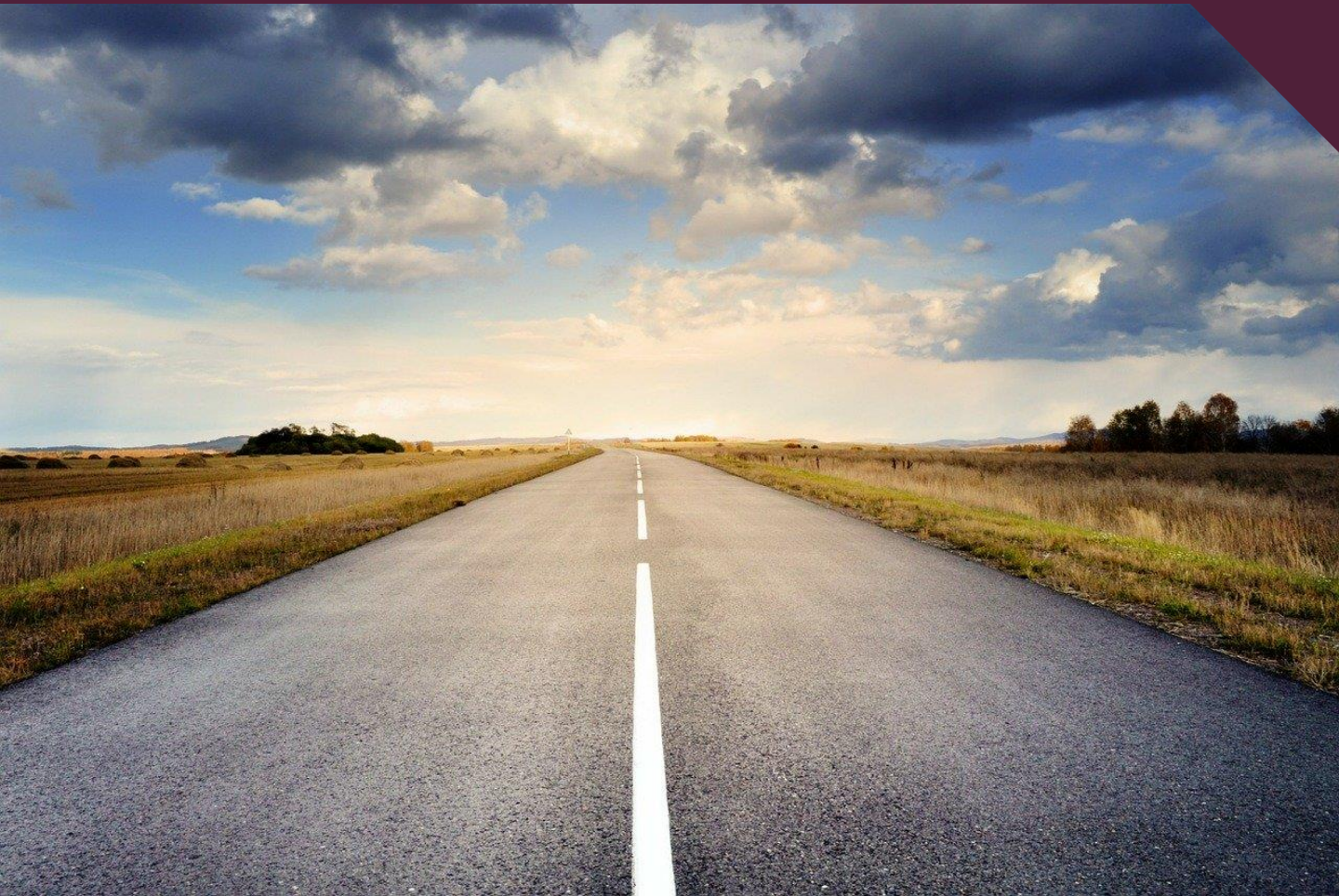




European
Joint
Support Unit

Vehicles & Travel

Izmir





DRIVING TO TURKIYE

Driving to Turkiye (there is also a train service available) is not a problem but each country that you may transit through has its own set of rules and regulations that may or may not affect your journey. Please conduct thorough research before you embark on your journey. The AA or RAC should be able to offer you sound advice. Do check with the Foreign and Commonwealth Office (FCO) web site for further travel advice.

<http://www.fco.gov.uk> – travel advice available.

http://www.theaa.com/motoring_advice/overseas/countrybycountry.html - selectable by country – good advice.

<http://www.nationalcar.co.uk/drivesafe/english/index.html> - general advice with a drop-down menu to select the country.

<http://www.bugeurope.com/transport/driving.html> - not always the most descriptive but worth a look.

Car Insurance. For entry into Turkiye you should produce your green card, Bill of Sale for the vehicle, driving licence and UK car registration document to the Turkish Customs at the border crossing. (It is recommended that your Green Card also covers you driving in Turkey. If you do not have a valid Green Card for Turkiye, you can purchase the legally-required third-party insurance at the border and it is worthwhile getting this for three months duration). You will need to get your Passport stamped to allow you to drive in Turkiye on your national registration until your car is legally registered. This permission should be good for up to 180 days, but may be less if you travel on a green card for example. Either way, this gives plenty of time to register your car.

Night Stops. In Germany, Austria, Hungary and Italy, hotels and camping places are no problem. Thereafter, standards vary and it is best to look for suitable accommodation reasonably early so that you are not forced into having your choice determined by the lateness of the hour. This especially applies in winter when many hotels are closed. Also, you should note that the 'star systems' for hotels are not necessarily as those in the UK. As a general rule of thumb, a 3-star hotel in Eastern Europe should be considered to be equivalent to 2-star in NW Europe. Camp sites in Romania and Bulgaria are cheap, but basic.

Tax-free Motor Vehicles UK. Service personnel on assignment to Turkiye are entitled to purchase tax free motor vehicles. Single/Unaccompanied soldiers can only register one motor vehicle on the Turkish Traffic system where as married accompanied personnel can register 2 vehicles at the Turkish Traffic system.

Tax free motor vehicles Turkiye. Consistent with Article VIII paragraph 2 and 3 of the Paris Protocol, personnel who are entitled to temporarily import motor vehicles in accordance with Article XI paragraph 6 of the NATO SOFA may also purchase such motor vehicles on the Turkish commercial market free of duties and taxes.